

Appendix 3-1

MVSPA Long Term Monthly Water Budgets

Mississippi-Rideau Source Protection Region

APPENDIX 3-1

Long-term (1971-2000) monthly water budgets for Tier 1 subwatersheds in the Mississippi Valley Source Protection Area
Mississippi-Rideau Source Protection Region

| Water Budget Component ¹ | Equivalent Water Depth (mm) | | | | | | | | | | | | |
|--|-----------------------------|-----|-----|-----|-----|-----|-----|-----|-----|-----|-----|-----|--------|
| | Jan | Feb | Mar | Apr | May | Jun | Jul | Aug | Sep | Oct | Nov | Dec | Annual |
| Mississippi River Below Marble Lake (Station 02KF016) | | | | | | | | | | | | | |
| Precipitation | 79 | 53 | 73 | 69 | 75 | 86 | 77 | 82 | 90 | 77 | 83 | 75 | 919 |
| Evapotranspiration | 0 | 0 | 0 | 25 | 75 | 109 | 123 | 106 | 70 | 31 | 1 | 0 | 540 |
| Surface Water (out) | 37 | 31 | 39 | 86 | 58 | 22 | 14 | 8 | 9 | 18 | 42 | 57 | 420 |
| Delta Storage + Residual | 42 | 22 | 34 | -42 | -58 | -46 | -60 | -31 | 12 | 27 | 40 | 18 | -41 |
| Mississippi River At High Falls (OPG Generating Station) | | | | | | | | | | | | | |
| Precipitation | 85 | 53 | 75 | 68 | 74 | 85 | 78 | 79 | 90 | 74 | 86 | 76 | 925 |
| Evapotranspiration | 0 | 0 | 0 | 25 | 75 | 110 | 123 | 106 | 70 | 32 | 1 | 0 | 544 |
| Surface Water (out) ² | 39 | 35 | 42 | 55 | 45 | 18 | 17 | 17 | 17 | 16 | 25 | 35 | 359 |
| Delta Storage + Residual | 46 | 19 | 34 | -11 | -45 | -43 | -63 | -44 | 3 | 26 | 60 | 41 | 22 |
| Clyde River Near Lanark (Station 02KF010) | | | | | | | | | | | | | |
| Precipitation | 74 | 53 | 70 | 68 | 75 | 81 | 78 | 79 | 86 | 73 | 77 | 75 | 889 |
| Evapotranspiration | 0 | 0 | 0 | 26 | 76 | 111 | 125 | 107 | 70 | 32 | 1 | 0 | 549 |
| Surface Water (out) | 23 | 19 | 46 | 126 | 59 | 19 | 8 | 5 | 3 | 8 | 16 | 24 | 357 |
| Delta Storage + Residual | 51 | 34 | 24 | -84 | -60 | -49 | -55 | -34 | 12 | 33 | 60 | 51 | -16 |
| Fall River At Bennett Lake (Station 02KF014) | | | | | | | | | | | | | |
| Precipitation | 76 | 55 | 71 | 70 | 75 | 78 | 74 | 77 | 89 | 74 | 81 | 79 | 900 |
| Evapotranspiration | 0 | 0 | 0 | 27 | 76 | 112 | 126 | 109 | 72 | 34 | 4 | 0 | 561 |
| Surface Water (out) | 33 | 32 | 58 | 109 | 61 | 23 | 10 | 6 | 5 | 5 | 13 | 29 | 383 |
| Delta Storage + Residual | 43 | 23 | 13 | -66 | -62 | -57 | -63 | -37 | 12 | 35 | 64 | 50 | -44 |
| Mississippi River At Fergusons Falls (Station 02KF001) | | | | | | | | | | | | | |

| Water Budget Component ¹ | Equivalent Water Depth (mm) | | | | | | | | | | | | |
|---|-----------------------------|-----|-----|-----|-----|-----|-----|-----|-----|-----|-----|-----|--------|
| | Jan | Feb | Mar | Apr | May | Jun | Jul | Aug | Sep | Oct | Nov | Dec | Annual |
| Precipitation | 78 | 54 | 72 | 69 | 75 | 82 | 77 | 79 | 88 | 74 | 81 | 77 | 905 |
| Evapotranspiration | 0 | 0 | 0 | 26 | 76 | 111 | 125 | 107 | 71 | 33 | 2 | 0 | 550 |
| Surface Water (out) | 33 | 30 | 49 | 90 | 56 | 21 | 12 | 11 | 11 | 12 | 20 | 31 | 375 |
| Delta Storage + Residual | 45 | 24 | 23 | -47 | -57 | -50 | -59 | -40 | 7 | 30 | 59 | 46 | -20 |
| Mississippi River At Appleton (Station 02KF006) | | | | | | | | | | | | | |
| Precipitation | 77 | 54 | 72 | 69 | 75 | 81 | 77 | 79 | 88 | 74 | 81 | 77 | 904 |
| Evapotranspiration | 0 | 0 | 0 | 26 | 76 | 111 | 125 | 107 | 71 | 33 | 2 | 0 | 552 |
| Streamflow (out) | 31 | 28 | 47 | 89 | 56 | 20 | 10 | 10 | 9 | 11 | 18 | 29 | 358 |
| Delta Storage + Residual | 46 | 26 | 24 | -46 | -57 | -50 | -58 | -38 | 8 | 30 | 60 | 48 | -6 |
| Indian River Near Blakeney (Station 02KF012) | | | | | | | | | | | | | |
| Precipitation | 67 | 54 | 67 | 68 | 75 | 78 | 78 | 80 | 84 | 75 | 73 | 76 | 876 |
| Evapotranspiration | 0 | 0 | 0 | 28 | 77 | 113 | 128 | 108 | 71 | 33 | 2 | 0 | 560 |
| Surface Water (out) | 20 | 17 | 46 | 115 | 49 | 15 | 9 | 6 | 6 | 11 | 15 | 21 | 330 |
| Delta Storage + Residual | 47 | 37 | 22 | -75 | -51 | -50 | -58 | -34 | 6 | 32 | 56 | 55 | -15 |
| Mississippi River At Galetta (ungauged) | | | | | | | | | | | | | |
| Precipitation | 75 | 54 | 71 | 68 | 75 | 80 | 78 | 79 | 87 | 75 | 79 | 77 | 898 |
| Evapotranspiration | 0 | 0 | 0 | 27 | 76 | 112 | 126 | 108 | 71 | 33 | 2 | 0 | 555 |
| Surface Water (out) ³ | 26 | 24 | 46 | 89 | 50 | 17 | 9 | 9 | 8 | 10 | 17 | 25 | 331 |
| Delta Storage + Residual | 48 | 30 | 25 | -47 | -52 | -49 | -58 | -37 | 8 | 32 | 60 | 51 | 12 |
| Mississippi River Outlet (ungauged) | | | | | | | | | | | | | |
| Precipitation | 75 | 54 | 71 | 68 | 75 | 80 | 78 | 79 | 87 | 75 | 79 | 77 | 898 |
| Evapotranspiration | 0 | 0 | 0 | 27 | 76 | 112 | 126 | 108 | 71 | 33 | 2 | 0 | 555 |
| Surface Water (out) ³ | 26 | 24 | 46 | 89 | 50 | 17 | 9 | 8 | 8 | 10 | 17 | 25 | 331 |
| Delta Storage + Residual | 48 | 30 | 25 | -47 | -52 | -49 | -58 | -37 | 8 | 32 | 60 | 51 | 11 |
| Carp River Near Kinburn (Station 02KF011) | | | | | | | | | | | | | |

| Water Budget Component ¹ | Equivalent Water Depth (mm) | | | | | | | | | | | | |
|---|-----------------------------|-----|-----|-----|-----|-----|-----|-----|-----|-----|-----|-----|--------|
| | Jan | Feb | Mar | Apr | May | Jun | Jul | Aug | Sep | Oct | Nov | Dec | Annual |
| Precipitation | 68 | 56 | 70 | 68 | 77 | 80 | 82 | 84 | 84 | 78 | 75 | 79 | 902 |
| Evapotranspiration | 0 | 0 | 0 | 29 | 78 | 114 | 130 | 111 | 72 | 33 | 3 | 0 | 571 |
| Surface Water (out) | 12 | 11 | 69 | 126 | 34 | 11 | 6 | 6 | 4 | 10 | 18 | 19 | 326 |
| Delta Storage + Residual | 56 | 45 | 1 | -87 | -36 | -45 | -53 | -33 | 8 | 35 | 54 | 60 | 4 |
| Carp River Outlet (ungauged) | | | | | | | | | | | | | |
| Precipitation | 68 | 56 | 70 | 68 | 76 | 78 | 82 | 84 | 83 | 78 | 75 | 78 | 896 |
| Evapotranspiration | 0 | 0 | 0 | 29 | 79 | 114 | 130 | 111 | 72 | 33 | 3 | 0 | 571 |
| Surface Water (out) ⁴ | 13 | 11 | 72 | 133 | 36 | 12 | 6 | 7 | 4 | 11 | 19 | 20 | 344 |
| Delta Storage + Residual | 55 | 44 | -3 | -95 | -38 | -48 | -54 | -34 | 7 | 34 | 52 | 59 | -19 |
| Ottawa MVC (ungauged) | | | | | | | | | | | | | |
| Precipitation | 68 | 55 | 69 | 68 | 76 | 68 | 82 | 85 | 82 | 79 | 75 | 78 | 884 |
| Evapotranspiration | 0 | 0 | 0 | 30 | 79 | 115 | 130 | 111 | 72 | 33 | 3 | 0 | 573 |
| Surface Water (out) ⁴ | 13 | 11 | 72 | 133 | 36 | 12 | 6 | 7 | 4 | 11 | 19 | 20 | 344 |
| Delta Storage + Residual | 55 | 44 | -3 | -95 | -38 | -59 | -54 | -34 | 6 | 35 | 52 | 58 | -33 |
| 1. Refer to Section 3.3 for a description of estimation methods. | | | | | | | | | | | | | |
| 2. Surface water flows for Mississippi River At High Falls were obtained from the Ontario Power Generating Station (OPG). | | | | | | | | | | | | | |
| 3. Flows for Mississippi River At Galetta were estimated by taking flows from the Appleton and Blakeney gauges and adding them to average pro-rated flows from Carp River Near Kinburn and Indian River Near Blakeney gauges. | | | | | | | | | | | | | |
| 4. Flows at Carp River (Outlet) and Ottawa MVC were estimated by pro-rating to Carp River At Kinburn (02KF011). | | | | | | | | | | | | | |

Appendix 3-2

RVSPA Long Term Monthly Water Budgets

Mississippi-Rideau Source Protection Region

Appendix 3-2

Long-term (1971-2000) monthly water budgets for Tier 1 subwatersheds in Rideau Valley Source Protection Area
Mississippi-Rideau Source Protection Region

| Water Budget Component ¹ | Equivalent Water Depth (mm) | | | | | | | | | | | | |
|---|-----------------------------|-----|-----|-----|-----|-----|-----|-----|-----|-----|-----|-----|--------|
| | Jan | Feb | Mar | Apr | May | Jun | Jul | Aug | Sep | Oct | Nov | Dec | Annual |
| Tay River At Perth (Station 02LA024) | | | | | | | | | | | | | |
| Precipitation | 74 | 57 | 71 | 72 | 76 | 77 | 73 | 78 | 90 | 76 | 82 | 81 | 906 |
| Evapotranspiration | 0 | 0 | 0 | 28 | 76 | 112 | 128 | 110 | 73 | 34 | 5 | 0 | 567 |
| Surface water (out) | 33 | 24 | 31 | 80 | 49 | 25 | 16 | 17 | 18 | 17 | 18 | 28 | 355 |
| Δ Storage + Residual | 42 | 33 | 40 | -36 | -50 | -60 | -71 | -48 | -2 | 24 | 59 | 53 | -17 |
| Rideau River Above Smiths Falls (Station 02LA005) | | | | | | | | | | | | | |
| Precipitation | 73 | 57 | 70 | 72 | 76 | 76 | 74 | 79 | 90 | 77 | 82 | 82 | 909 |
| Evapotranspiration | 0 | 0 | 0 | 29 | 77 | 113 | 129 | 110 | 73 | 35 | 5 | 0 | 570 |
| Surface water (out) | 32 | 28 | 36 | 67 | 43 | 25 | 23 | 22 | 26 | 28 | 23 | 29 | 383 |
| Δ Storage + Residual | 41 | 29 | 34 | -24 | -44 | -62 | -78 | -53 | -9 | 15 | 53 | 52 | -45 |
| Rideau River Below Merrickville (Station 02LA011) | | | | | | | | | | | | | |
| Precipitation | 73 | 58 | 71 | 72 | 76 | 76 | 76 | 81 | 91 | 77 | 81 | 82 | 914 |
| Evapotranspiration | 0 | 0 | 0 | 29 | 77 | 113 | 129 | 111 | 73 | 35 | 6 | 0 | 574 |
| Surface water (out) | 34 | 28 | 54 | 84 | 37 | 17 | 13 | 12 | 16 | 23 | 26 | 32 | 375 |
| Δ Storage + Residual | 39 | 30 | 17 | -42 | -38 | -54 | -66 | -42 | 2 | 20 | 49 | 50 | -35 |
| Kemptonville Creek Near Kemptonville (02LA006) | | | | | | | | | | | | | |
| Precipitation | 73 | 59 | 73 | 74 | 78 | 78 | 85 | 85 | 96 | 79 | 83 | 85 | 949 |
| Evapotranspiration | 0 | 0 | 0 | 31 | 78 | 114 | 131 | 112 | 74 | 35 | 11 | 0 | 586 |
| Surface water (out) | 25 | 24 | 81 | 127 | 34 | 10 | 5 | 5 | 5 | 11 | 25 | 32 | 383 |
| Δ Storage + Residual | 49 | 35 | -8 | -84 | -34 | -46 | -51 | -32 | 18 | 33 | 47 | 53 | -21 |
| Rideau River Below Manotick (Station 02LA012) | | | | | | | | | | | | | |
| Precipitation | 72 | 58 | 72 | 72 | 77 | 77 | 80 | 82 | 92 | 78 | 81 | 83 | 925 |
| Evapotranspiration | 0 | 0 | 0 | 30 | 78 | 113 | 130 | 111 | 73 | 35 | 7 | 0 | 576 |
| Surface water (out) | 29 | 25 | 63 | 97 | 34 | 14 | 8 | 8 | 11 | 18 | 27 | 33 | 368 |
| Δ Storage + Residual | 43 | 33 | 9 | -54 | -34 | -50 | -58 | -37 | 8 | 25 | 47 | 49 | -20 |

| Water Budget Component ¹ | Equivalent Water Depth (mm) | | | | | | | | | | | | |
|---|-----------------------------|-----|-----|------|-----|-----|-----|-----|-----|-----|-----|-----|--------|
| | Jan | Feb | Mar | Apr | May | Jun | Jul | Aug | Sep | Oct | Nov | Dec | Annual |
| Jock River Near Richmond (Station 02LA007) | | | | | | | | | | | | | |
| Precipitation | 70 | 57 | 72 | 70 | 77 | 79 | 84 | 83 | 88 | 78 | 77 | 81 | 917 |
| Evapotranspiration | 0 | 0 | 0 | 30 | 78 | 114 | 130 | 112 | 73 | 34 | 4 | 0 | 575 |
| Surface water (out) | 20 | 18 | 75 | 144 | 36 | 12 | 7 | 6 | 6 | 13 | 23 | 26 | 387 |
| Δ Storage + Residual | 50 | 39 | -4 | -103 | -37 | -46 | -54 | -34 | 9 | 31 | 49 | 55 | -44 |
| Rideau River At Ottawa (Station 02LA004) | | | | | | | | | | | | | |
| Precipitation | 72 | 58 | 72 | 72 | 77 | 78 | 81 | 82 | 91 | 78 | 80 | 83 | 924 |
| Evapotranspiration | 0 | 0 | 0 | 30 | 78 | 113 | 130 | 111 | 73 | 34 | 6 | 0 | 576 |
| Surface water (out) | 27 | 25 | 64 | 102 | 34 | 14 | 9 | 8 | 10 | 18 | 25 | 31 | 367 |
| Δ Storage + Residual | 45 | 33 | 8 | -60 | -34 | -49 | -58 | -37 | 8 | 25 | 49 | 52 | -18 |
| Rideau River Outlet (ungauged) | | | | | | | | | | | | | |
| Precipitation | 72 | 58 | 72 | 72 | 77 | 78 | 81 | 82 | 91 | 78 | 80 | 83 | 924 |
| Evapotranspiration | 0 | 0 | 0 | 30 | 78 | 113 | 130 | 111 | 73 | 34 | 6 | 0 | 575 |
| Surface water (out) | 27 | 25 | 64 | 102 | 34 | 14 | 9 | 8 | 10 | 18 | 25 | 31 | 367 |
| Δ Storage + Residual | 45 | 33 | 8 | -60 | -34 | -50 | -58 | -37 | 8 | 25 | 49 | 52 | -17 |
| Ottawa RVCA West (ungauged) | | | | | | | | | | | | | |
| Precipitation | 70 | 57 | 72 | 70 | 78 | 70 | 86 | 86 | 87 | 80 | 77 | 82 | 916 |
| Evapotranspiration | 0 | 0 | 0 | 29 | 79 | 114 | 115 | 97 | 72 | 33 | 4 | 0 | 544 |
| Surface water (out) | 22 | 21 | 67 | 103 | 48 | 37 | 32 | 32 | 30 | 32 | 26 | 26 | 477 |
| Δ Storage + Residual | 48 | 36 | 5 | -62 | -49 | -81 | -61 | -43 | -15 | 15 | 47 | 56 | -105 |
| Ottawa RVCA East (ungauged) | | | | | | | | | | | | | |
| Precipitation | 71 | 59 | 72 | 72 | 80 | 72 | 88 | 91 | 90 | 82 | 80 | 83 | 941 |
| Evapotranspiration | 0 | 0 | 0 | 29 | 79 | 113 | 125 | 106 | 71 | 33 | 4 | 0 | 560 |
| Surface water (out) | 17 | 16 | 70 | 119 | 42 | 24 | 19 | 19 | 17 | 21 | 23 | 23 | 409 |
| Δ Storage + Residual | 54 | 43 | 2 | -75 | -41 | -65 | -56 | -35 | 2 | 29 | 54 | 61 | -27 |
| 1. Refer to Section 3.3 for a description of estimation methods. | | | | | | | | | | | | | |
| 2. Flows for Rideau River (Outlet) were estimated by pro-rating to the gauge at Ottawa (02LA004). | | | | | | | | | | | | | |
| 3. Flows for Ottawa RVCA West/East were estimated by pro-rating to Black Creek gauge in Toronto. | | | | | | | | | | | | | |
| Black Creek has a higher degree of imperviousness than other M-R subwatersheds and a continuous record. | | | | | | | | | | | | | |

| Water Budget Component ¹ | Equivalent Water Depth (mm) | | | | | | | | | | | | |
|--|-----------------------------|-----|-----|-----|-----|-----|-----|-----|-----|-----|-----|-----|--------|
| | Jan | Feb | Mar | Apr | May | Jun | Jul | Aug | Sep | Oct | Nov | Dec | Annual |
| Flows were multiplied by the ratio of average annual precipitation between Ottawa and Toronto (1971-2000) to account for precipitation differences between the gauges. See Appendix A of Tier 1 (MRSPR, 2009) for further details. | | | | | | | | | | | | | |

Appendix 3-3

PTTW Surface Water

Mississippi-Rideau Source Protection Region

APPENDIX 3-3Permits to Take Water Used in Surface Water Stress Assessments in the MVSPA
Mississippi-Rideau Source Protection Region

| Permit ID | Specific Purpose | Max. Permitted Taking (m ³ /d) | C.F. ¹ | Consumptive Demands (m ³ per month) | | | | | | | | | | | |
|--|------------------------|---|-------------------|--|--------|--------|--------|--------|--------|--------|--------|--------|--------|--------|--------|
| | | | | Jan | Feb | Mar | Apr | May | Jun | Jul | Aug | Sep | Oct | Nov | Dec |
| <i>Mississippi Valley Source Protection Area</i> | | | | | | | | | | | | | | | |
| <i>Mississippi River Below Marble Lake</i> | | | | | | | | | | | | | | | |
| 87-P-4046 | Other – Water Supply | 135.9 | 0.2 | - | - | - | - | 761.9 | 737.4 | 761.9 | 761.9 | 737.4 | 761.9 | - | - |
| 99-P-4029 | Other – Water Supply | 270.0 | 0.2 | 1,674 | 1,512 | 1,674 | 1,620 | 1,674 | 1,620 | 1,674 | 1,674 | 1,620 | 1,674 | 1,620 | 1,674 |
| <i>Mississippi River At High Falls</i> | | | | | | | | | | | | | | | |
| 97-P-4023 | Aquaculture | 72.00 | 0.1 | 223.2 | 201.6 | 223.2 | 216.0 | 223.2 | 216.0 | 223.2 | 223.2 | 216.0 | 223.2 | 216.0 | 223.2 |
| 97-P-4023 | Aquaculture | 1,654 | 0.1 | 5,128 | 4,632 | 5,128 | 4,963 | 5,128 | 4,963 | 5,128 | 5,128 | 4,963 | 5,128 | 4,963 | 5,128 |
| 97-P-4023 | Aquaculture | 2,974 | 0.1 | 9,218 | 8,326 | 9,218 | 8,921 | 9,218 | 8,921 | 9,218 | 9,218 | 8,921 | 9,218 | 8,921 | 9,218 |
| <i>Clyde River Near Lanark</i> | | | | | | | | | | | | | | | |
| 95-P-4021 | Fish Ponds | 50,000 | 0.25 | - | - | - | - | - | - | - | 12,740 | - | - | - | - |
| 99-P-4016 | Other – Recreation | 13,000 | 0.1 | 40,300 | 36,400 | 40,300 | 39,000 | 40,300 | 39,000 | 40,300 | 40,300 | 39,000 | 40,300 | 39,000 | 40,300 |
| <i>Fall River At Bennett Lake</i> | | | | | | | | | | | | | | | |
| 0268-6QHQCJ | Aquaculture | 15,120 | 0.1 | 46,872 | 42,336 | 46,872 | 45,360 | 46,872 | 45,360 | 46,872 | 46,872 | 45,360 | 46,872 | 45,360 | 46,872 |
| <i>Mississippi River At Fergusons Falls</i> | | | | | | | | | | | | | | | |
| 2326-6DBQ5Q | Golf Course Irrigation | 4.55 | 0.7 | - | - | - | 95.95 | 99.15 | 95.95 | 99.15 | 99.15 | 95.95 | 99.15 | - | - |
| 2326-6DBQ5Q | Golf Course Irrigation | 272.8 | 0.7 | - | - | - | - | - | - | 5,838 | 5,838 | 5,649 | - | - | - |
| 7705-6AJSZ7 | Golf Course Irrigation | 818.3 | 0.7 | - | - | - | - | - | - | - | 6,811 | 13,182 | - | - | - |
| 98-P-4077 | Golf Course Irrigation | 151.4 | 0.7 | - | - | - | 1,568 | 3,240 | 3,136 | 3,240 | 3,240 | 3,136 | 1,620 | - | - |
| 8120-6EQQVT | Pits and Quarries | 867.4 | 0.25 | 6,722 | 6,072 | 6,722 | 6,505 | 6,722 | 6,505 | 6,722 | 6,722 | 6,505 | 6,722 | 6,505 | 6,722 |

¹ C.F. – Consumption Factor

| Permit ID | Specific Purpose | Max. Permitted Taking (m ³ /d) | C.F. ¹ | Consumptive Demands (m ³ per month) | | | | | | | | | | | |
|--------------------------------------|-------------------------|---|-------------------|--|---------------------|---------------------|---------------------|---------------------|---------------------|---------------------|---------------------|---------------------|---------------------|---------------------|---------------------|
| | | | | Jan | Feb | Mar | Apr | May | Jun | Jul | Aug | Sep | Oct | Nov | Dec |
| 8120-6EQQVT | Pits and Quarries | 7,855 | 0.25 | 60,880 | 54,988 | 60,880 | 58,916 | 60,880 | 58,916 | 60,880 | 60,880 | 58,916 | 60,880 | 58,916 | 60,880 |
| 03-P-4005 | Tender Fruit | 163.7 | 0.8 | - | - | - | - | - | 1,937 | 4,003 | 4,003 | - | - | - | - |
| <i>Mississippi River At Appleton</i> | | | | | | | | | | | | | | | |
| 64-P-0349 | Golf Course Irrigation | 1,637 | 0.7 | - | - | - | - | 35,027 | 33,897 | 35,027 | 35,027 | 33,897 | - | - | - |
| 8060-6AXJGM | Golf Course Irrigation | 257.6 | 0.7 | - | - | - | - | - | 5,453 | 5,635 | 5,635 | - | - | - | - |
| 8060-6AXJGM | Golf Course Irrigation | 293.0 | 0.7 | - | - | - | - | - | 6,203 | 6,410 | 6,410 | - | - | - | - |
| 6882-686R5M | Municipal | 12,000 ² | 0.2 | 74,400 | 67,200 | 74,400 | 72,000 | 74,400 | 72,000 | 74,400 | 74,400 | 72,000 | 74,400 | 72,000 | 74,400 |
| <i>Indian River Near Blakeney</i> | | | | | | | | | | | | | | | |
| 0180-6FERC9 | Other – Dewatering | 3,600 | 0.25 | - | - | 27,314 | 26,433 | 27,314 | 26,433 | 27,314 | 27,314 | 26,433 | 27,314 | 26,433 | - |
| <i>Mississippi River At Galetta</i> | | | | | | | | | | | | | | | |
| 88-P-4021C | Market Gardens /Flowers | 368.2 | 0.9 | - | - | - | - | - | - | 1,689 | 1,689 | - | - | - | - |
| 88-P-4021C | Market Gardens /Flowers | 589.2 | 0.9 | - | - | - | - | - | - | 2,702 | 2,702 | - | - | - | - |
| 6200-648J3R | Power Production | 2.94×10 ⁶ | 0.1 | 9.1×10 ⁶ | 8.2×10 ⁶ | 9.1×10 ⁶ | 8.8×10 ⁶ | 9.1×10 ⁶ | 8.8×10 ⁶ | 9.1×10 ⁶ | 9.1×10 ⁶ | 8.8×10 ⁶ | 9.1×10 ⁶ | 8.8×10 ⁶ | 9.1×10 ⁶ |
| 8715-6F6NQD | Power Production | 1.21×10 ⁶ | 0.1 | 3.7×10 ⁶ | 3.4×10 ⁶ | 3.7×10 ⁶ | 3.6×10 ⁶ | 3.7×10 ⁶ | 3.6×10 ⁶ | 3.7×10 ⁶ | 3.7×10 ⁶ | 3.6×10 ⁶ | 3.7×10 ⁶ | 3.6×10 ⁶ | 3.7×10 ⁶ |
| 92-P-4091 | Power Production | 3.50×10 ⁶ | 0.1 | 1.1×10 ⁷ | 9.8×10 ⁶ | 1.1×10 ⁷ | 1.1×10 ⁷ | 1.1×10 ⁷ | 1.1×10 ⁷ | 1.1×10 ⁷ | 1.1×10 ⁷ | 1.1×10 ⁷ | 1.1×10 ⁷ | 1.1×10 ⁷ | 1.1×10 ⁷ |
| 6074-5ZMHW Y | Snow-making | 5,891 | 0.5 | 93,062 | 42,028 | - | - | - | - | - | - | - | - | - | 46,531 |
| <i>Mississippi River (Outlet)</i> | | | | | | | | | | | | | | | |
| No permits | - | - | - | - | - | - | - | - | - | - | - | - | - | - | - |
| <i>Carp River Near Kinburn</i> | | | | | | | | | | | | | | | |
| 01-P-4014 | Golf Course Irrigation | 1,227 | 0.7 | - | - | - | - | 24,519 | 23,728 | 24,519 | 24,519 | 23,728 | - | - | - |
| 4384-6CXLQ3 | Golf Course Irrigation | 191.6 | 0.7 | - | - | - | 2,029 | 4,193 | 4,057 | 4,193 | 4,193 | 4,057 | 2,096 | - | - |

² Consumptive municipal demand is calculated based on municipal water takings data (multiplied by the consumptive factor).

| Permit ID | Specific Purpose | Max. Permitted Taking (m ³ /d) | C.F. ¹ | <i>Consumptive Demands (m³ per month)</i> | | | | | | | | | | | |
|----------------------------|------------------------|---|-------------------|--|--------|--------|--------|--------|--------|--------|--------|--------|--------|--------|--------|
| | | | | Jan | Feb | Mar | Apr | May | Jun | Jul | Aug | Sep | Oct | Nov | Dec |
| 4384-6CXLQ3 | Golf Course Irrigation | 191.6 | 0.7 | - | - | - | 2,029 | 4,193 | 4,057 | 4,193 | 4,193 | 4,057 | 2,096 | - | - |
| 02-P-4048 | Pits and Quarries | 6,255 | 0.25 | 48,479 | 43,788 | 48,479 | 46,915 | 48,479 | 46,915 | 48,479 | 48,479 | 46,915 | 48,479 | 46,915 | 48,479 |
| 5007-6CQL87 | Pits and Quarries | 660.0 | 0.25 | 4,919 | 4,443 | 4,919 | 4,760 | 4,919 | 4,760 | 4,919 | 4,919 | 4,760 | 4,919 | 4,760 | 4,919 |
| 5007-6CQL87 | Pits and Quarries | 1,584 | 0.25 | - | - | - | - | - | - | 5,650 | - | - | - | - | - |
| 91-P-4022 | Pits and Quarries | 16.27 | 0.25 | 126 | 114 | 126 | 122 | 126 | 122 | 126 | 126 | 122 | 126 | 122 | 126 |
| 91-P-4022 | Pits and Quarries | 16.27 | 0.25 | 126 | 114 | 126 | 122 | 126 | 122 | 126 | 126 | 122 | 126 | 122 | 126 |
| <i>Carp River (Outlet)</i> | | | | | | | | | | | | | | | |
| No permits | - | - | - | - | - | - | - | - | - | - | - | - | - | - | - |
| <i>Ottawa MVC</i> | | | | | | | | | | | | | | | |
| 1733-6GDJGB | Golf Course Irrigation | 685.0 | 0.7 | - | - | - | - | - | 14,188 | 14,661 | 14,661 | 14,188 | - | - | - |
| 1733-6GDJGB | Golf Course Irrigation | 697.0 | 0.7 | - | - | - | - | - | 14,436 | 14,918 | 14,918 | 14,436 | - | - | - |
| 1733-6GDJGB | Golf Course Irrigation | 712.0 | 0.7 | - | - | - | - | - | 14,747 | 15,239 | 15,239 | 14,747 | - | - | - |
| 1733-6GDJGB | Golf Course Irrigation | 825.0 | 0.7 | - | - | - | - | - | 17,088 | 17,657 | 17,657 | 17,088 | - | - | - |

| Permit ID | Specific Purpose | Max. Permitted Taking (m ³ /d) | C.F. | Consumptive Demands (m ³ per month) | | | | | | | | | | | |
|--------------------------------------|------------------------|---|------|--|---------|---------|---------|---------|---------|---------|---------|---------|---------|---------|---------|
| | | | | Jan | Feb | Mar | Apr | May | Jun | Jul | Aug | Sep | Oct | Nov | Dec |
| RIDEAU VALLEY Source Protection Area | | | | | | | | | | | | | | | |
| Tay River At Perth | | | | | | | | | | | | | | | |
| 98-P-4054 | Aesthetics | 300.0 | 0.25 | - | - | - | - | - | - | 573.3 | 573.3 | 554.8 | 573.3 | - | - |
| 3377-6E3RQC | Golf Course Irrigation | 240.0 | 0.7 | - | - | - | - | 2,568 | 4,971 | 5,137 | 5,137 | 2,485 | - | - | - |
| 98-P-4020 | Golf Course Irrigation | 526.9 | 0.7 | - | - | - | - | - | 9,094 | 9,397 | 9,397 | 9,094 | - | - | - |
| 5464-6MHL84 | Municipal | 9,092 | 0.2 | 56,370 | 50,915 | 56,370 | 54,552 | 56,370 | 54,552 | 56,370 | 56,370 | 54,552 | 56,370 | 54,552 | 56,370 |
| 03-P-4107 | Other – Commercial | 1,483 ³ | 1 | 10,084 | 10,784 | 10,068 | 11,263 | 10,849 | 9,238 | 11,211 | 8,337 | 11,346 | 12,702 | 8,298 | 7,718 |
| Rideau River Above Smiths Falls | | | | | | | | | | | | | | | |
| 00-P-4048 | Golf Course Irrigation | 600.1 | 0.7 | - | - | - | - | - | 3,107 | 3,211 | 3,211 | 3,107 | - | - | - |
| Rideau River Below Merrickville | | | | | | | | | | | | | | | |
| 2360-6FBL34 | Golf Course Irrigation | 65.46 | 0.7 | 1,421 | 1,283 | 1,421 | 1,375 | 1,421 | 1,375 | 1,421 | 1,421 | 1,375 | 1,421 | 1,375 | 1,421 |
| 2360-6FBL34 | Golf Course Irrigation | 98.19 | 0.7 | - | - | - | 1,043 | 2,156 | 2,086 | 2,156 | 2,156 | 2,086 | 2,156 | - | - |
| 2360-6FBL34 | Golf Course Irrigation | 1,273 | 0.7 | - | - | - | 13,520 | 27,942 | 27,040 | 27,942 | 27,942 | 27,040 | 27,942 | - | - |
| 88-P-4010 | Municipal | 18,100 | 0.2 | 112,220 | 101,360 | 112,220 | 108,600 | 112,220 | 108,600 | 112,220 | 112,220 | 108,600 | 112,220 | 108,600 | 112,220 |
| Kemptville Creek Near Kemptville | | | | | | | | | | | | | | | |
| No permits | - | - | - | - | - | - | - | - | - | - | - | - | - | - | - |
| Rideau River Below Manotick | | | | | | | | | | | | | | | |
| 2266-6HYR2B | Golf Course Irrigation | 408.0 | 0.7 | - | - | - | - | 4,366 | 8,451 | 8,732 | 8,732 | 8,451 | 4,366 | - | - |
| 5421-6JKQXQ | Golf Course Irrigation | 327.3 | 0.7 | - | - | - | - | 7,005 | 6,779 | 7,005 | 7,005 | 6,779 | 7,005 | - | - |
| 5421-6JKQXQ | Golf Course Irrigation | 478.3 | 0.7 | - | - | - | - | 10,237 | 9,906 | 10,237 | 10,237 | 9,906 | 10,237 | - | - |
| 5421-6JKQXQ | Golf Course Irrigation | 8,052 | 0.7 | - | - | - | - | 172,332 | 166,773 | 172,332 | 172,332 | 166,773 | 172,332 | - | - |
| 7701-6QDNYP | Golf Course Irrigation | 1,500 | 0.7 | - | - | - | - | 32,104 | 31,068 | 32,104 | 32,104 | 31,068 | 32,104 | - | - |
| 7701-6QDNYP | Golf Course Irrigation | 1,500 | 0.7 | - | - | - | - | 32,104 | 31,068 | 32,104 | 32,104 | 31,068 | 32,104 | - | - |
| 8745-6P7H6D | Golf Course Irrigation | 1,499 | 0.7 | - | - | - | - | 32,667 | 31,613 | 32,667 | 32,667 | 31,613 | 16,333 | - | - |

³ Consumptive demand for this permit is based on OMYA data (multiplied by the consumptive factor).

| Permit ID | Specific Purpose | Max. Permitted Taking (m ³ /d) | C.F. | Consumptive Demands (m ³ per month) | | | | | | | | | | | |
|--------------------------|------------------------|---|------|--|---------|---------|---------|---------|---------|---------|---------|---------|---------|---------|---------|
| | | | | Jan | Feb | Mar | Apr | May | Jun | Jul | Aug | Sep | Oct | Nov | Dec |
| 8745-6P7H6D | Golf Course Irrigation | 2,498 | 0.7 | - | - | - | - | 54,445 | 52,689 | 54,445 | 54,445 | 52,689 | 27,222 | - | - |
| 2350-5ZZKM4 | Other - Industrial | 9,818 | 1 | - | - | - | - | 300,186 | 290,503 | 300,186 | 300,186 | 290,503 | - | - | - |
| 99-P-4034 | Other - Misc. | 1,364 | 1 | - | - | - | - | - | - | 20,849 | 41,699 | 20,177 | - | - | - |
| 68-P-0004 | Other - Recreation | 92.90 | 0.1 | - | - | - | - | - | - | 293.5 | 293.5 | 284.0 | - | - | - |
| 00-P-4122 | Sod Farm | 4,582 | 0.9 | - | - | - | 124,063 | 128,198 | 124,063 | 128,198 | 128,198 | 124,063 | - | - | - |
| Jock River Near Richmond | | | | | | | | | | | | | | | |
| 97-P-4015 | Aggregate Washing | 5,500 | 0.25 | - | - | - | - | - | - | - | 37,370 | 36,164 | 37,370 | - | - |
| 04-P-4010 | Golf Course Irrigation | 1,200 | 0.7 | - | - | - | - | - | - | - | 11,415 | 22,093 | - | - | - |
| 8616-6PUKRQ | Golf Course Irrigation | 780.1 | 0.7 | - | - | - | - | 17,067 | 16,517 | 17,067 | 17,067 | 16,517 | 17,067 | - | - |
| 94-P-4015 | Golf Course Irrigation | 200.0 | 0.7 | - | - | - | - | - | - | - | - | 2,071 | - | - | - |
| 92-P-4096 | Pits and Quarries | 1,309 | 0.25 | 10,147 | 9,165 | 10,147 | 9,819 | 10,147 | 9,819 | 10,147 | 10,147 | 9,819 | 10,147 | 9,819 | 10,147 |
| 0004-5ZMGZC | Tender Fruit | 0.11 | 0.8 | - | - | - | - | - | 2.40 | 1.24 | - | - | - | - | - |
| 0004-5ZMGZC | Tender Fruit | 3,814 | 0.8 | - | - | - | - | - | 80,242 | 41,459 | - | - | - | - | - |
| 8053-6ARJX9 | Tender Fruit | 220.6 | 0.8 | - | - | - | - | - | - | - | 3,598 | - | - | - | - |
| Rideau River At Ottawa | | | | | | | | | | | | | | | |
| 00-P-4021 | SWMF | 68,000 | 0.1 | 210,800 | 190,400 | 210,800 | 204,000 | 210,800 | 204,000 | 210,800 | 210,800 | 204,000 | 210,800 | 204,000 | 210,800 |
| 95-P-4059 | Fruit Orchards | 908.4 | 0.8 | - | - | - | - | - | - | 3,703 | 3,703 | - | - | - | - |
| 0202-6A5QGE | Golf Course Irrigation | 3,816 | 0.7 | - | - | - | - | - | 72,446 | 74,861 | 74,861 | 72,446 | - | - | - |
| 1314-68UQSY | Golf Course Irrigation | 1,391 | 0.7 | - | - | - | 29,498 | 30,482 | 29,498 | 30,482 | 30,482 | 29,498 | 30,482 | - | - |
| 1314-68UQSY | Golf Course Irrigation | 1,391 | 0.7 | - | - | - | 29,498 | 30,482 | 29,498 | 30,482 | 30,482 | 29,498 | 30,482 | - | - |
| 8628-6C9KR5 | Golf Course Irrigation | 757.0 | 0.7 | - | - | - | 8,041 | 16,617 | 16,081 | 16,617 | 16,617 | 16,081 | 16,617 | - | - |
| 8628-6C9KR5 | Golf Course Irrigation | 3,270 | 0.7 | - | - | - | - | - | - | - | - | 65,476 | - | - | - |
| 01-P-4024 | SWMF | 46,900 | 0.1 | 145,390 | 131,320 | 145,390 | 140,700 | 145,390 | 140,700 | 145,390 | 145,390 | 140,700 | 145,390 | 140,700 | 145,390 |

| Permit ID | Specific Purpose | Max. Permitted Taking (m ³ /d) | C.F. | Consumptive Demands (m ³ per month) | | | | | | | | | | | |
|-----------------------|------------------|---|------|--|---------|---------|---------|---------|---------|---------|---------|---------|---------|---------|---------|
| | | | | Jan | Feb | Mar | Apr | May | Jun | Jul | Aug | Sep | Oct | Nov | Dec |
| 01-P-4024 | SWMF | 1.40 ×10 ⁵ | 0.1 | 432,760 | 390,880 | 432,760 | 418,800 | 432,760 | 418,800 | 432,760 | 432,760 | 418,800 | 432,760 | 418,800 | 432,760 |
| 01-P-4024 | SWMF | 1.77×10 ⁵ | 0.1 | 548,700 | 495,600 | 548,700 | 531,000 | 548,700 | 531,000 | 548,700 | 548,700 | 531,000 | 548,700 | 531,000 | 548,700 |
| 1818-666RPS | Dewatering | 900.0 | 0.25 | 6,956 | 6,283 | 6,956 | 6,732 | 6,956 | 6,732 | 6,956 | 6,956 | 6,732 | 6,956 | 6,732 | 6,956 |
| 1818-666RPS | Dewatering | 1,325 | 0.25 | 10,239 | 9,248 | 10,239 | 9,909 | 10,239 | 9,909 | 10,239 | 10,239 | 9,909 | 10,239 | 9,909 | 10,239 |
| 1818-666RPS | Dewatering | 1,332 | 0.25 | 10,295 | 9,298 | 10,295 | 9,963 | 10,295 | 9,963 | 10,295 | 10,295 | 9,963 | 10,295 | 9,963 | 10,295 |
| Rideau River (Outlet) | | | | | | | | | | | | | | | |
| No permits | - | - | - | - | - | - | - | - | - | - | - | - | - | - | - |
| Ottawa RVCA (West) | | | | | | | | | | | | | | | |
| No permits | - | - | - | - | - | - | - | - | - | - | - | - | - | - | - |
| Ottawa RVCA (East) | | | | | | | | | | | | | | | |
| 03-P-4029 | Commercial | 688.4 | 1 | - | - | - | - | 21,048 | 20,369 | 21,048 | 21,048 | 20,369 | 21,048 | - | - |
| 95-P-4005 | Tender Fruit | 2,182 | 0.8 | - | - | - | - | - | - | - | 17,791 | - | - | - | - |

Appendix 3-4

PTTW - Groundwater

Mississippi-Rideau Source Protection Region

Appendix 3-4Permits to Take Water Used in Groundwater Stress Assessments
Mississippi-Rideau Source Protection Region

| Permit ID | Specific Purpose | Max. Permitted Taking (m ³ /d) | C.F. | Consumptive Demands (m ³ per month) | | | | | | | | | | | |
|--|------------------------|---|------|--|-------|-------|-------|-------|-------|-------|-------|-------|-------|-------|-------|
| | | | | Jan | Feb | Mar | Apr | May | Jun | Jul | Aug | Sep | Oct | Nov | Dec |
| <i>Mississippi Valley Source Protection Area</i> | | | | | | | | | | | | | | | |
| 90-P-4030 | Campground | 9.46 | 0.2 | 0 | 0 | 0 | 0 | 39 | 39 | 39 | 39 | 39 | 0 | 0 | 0 |
| 90-P-4030 | Campground | 15.46 | 0.2 | 0 | 0 | 0 | 0 | 64 | 64 | 64 | 64 | 64 | 0 | 0 | 0 |
| <i>Mississippi River At High Falls</i> | | | | | | | | | | | | | | | |
| 97-P-4023 | Aquaculture | 72.00 | 0.1 | 223 | 202 | 223 | 216 | 223 | 216 | 223 | 223 | 216 | 223 | 216 | 223 |
| <i>Clyde River Near Lanark</i> | | | | | | | | | | | | | | | |
| No Permits | | | | | | | | | | | | | | | |
| <i>Fall River At Bennett Lake</i> | | | | | | | | | | | | | | | |
| 92-P-4090 | Campground | 87.84 | 0.2 | 0 | 0 | 0 | 520 | 537 | 520 | 537 | 537 | 0 | 0 | 0 | 0 |
| <i>Mississippi River At Fergusons Falls</i> | | | | | | | | | | | | | | | |
| 98-P-4059 | Other - Industrial | 454.6 | 0.25 | 1042 | 1042 | 1042 | 1042 | 1042 | 1042 | 1042 | 1042 | 1042 | 1042 | 1042 | 1042 |
| 8120-6EQQVT | Pits and Quarries | 7855 | 0.25 | 60880 | 54988 | 60880 | 58916 | 60880 | 58916 | 60880 | 60880 | 58916 | 60880 | 58916 | 60880 |
| <i>Mississippi River At Appleton</i> | | | | | | | | | | | | | | | |
| 6481-63SLLL | Water Supply | 60.00 | 0.2 | 372 | 336 | 372 | 360 | 372 | 360 | 372 | 372 | 360 | 372 | 360 | 372 |
| 6481-63SLLL | Water Supply | 60.00 | 0.2 | 372 | 336 | 372 | 360 | 372 | 360 | 372 | 372 | 360 | 372 | 360 | 372 |
| 03-P-4016 | Campground | 79.00 | 0.2 | 490 | 442 | 490 | 474 | 490 | 474 | 490 | 490 | 474 | 490 | 474 | 490 |
| 03-P-4016 | Campground | 71.00 | 0.2 | 0 | 0 | 0 | 0 | 443 | 443 | 443 | 443 | 443 | 0 | 0 | 0 |
| 6850-5ZHKHY | Campground | 48.30 | 0.2 | 299 | 270 | 299 | 290 | 299 | 290 | 299 | 299 | 290 | 299 | 290 | 299 |
| 6850-5ZHKHY | Campground | 48.30 | 0.2 | 299 | 270 | 299 | 290 | 299 | 290 | 299 | 299 | 290 | 299 | 290 | 299 |
| 03-P-4014C | Communal | 60.00 | 0.2 | 372 | 336 | 372 | 360 | 372 | 360 | 372 | 372 | 360 | 372 | 360 | 372 |
| 8060-6AXJGM | Golf Course Irrigation | 257.6 | 0.7 | 0 | 0 | 0 | 0 | 0 | 4147 | 4147 | 4147 | 4147 | 0 | 0 | 0 |
| <i>Indian River Near Blakeney</i> | | | | | | | | | | | | | | | |
| 0180-6FERC9 | Dewatering | 3600 | 0.25 | 20100 | 20100 | 20100 | 20100 | 20100 | 20100 | 20100 | 20100 | 20100 | 20100 | 20100 | 20100 |
| <i>Mississippi River At Galetta</i> | | | | | | | | | | | | | | | |

| Permit ID | Specific Purpose | Max. Permitted Taking (m ³ /d) | C.F. | Consumptive Demands (m ³ per month) | | | | | | | | | | | |
|-----------------------------------|------------------------|---|------|--|-------|-------|-------|-------|-------|-------|-------|-------|-------|-------|-------|
| | | | | Jan | Feb | Mar | Apr | May | Jun | Jul | Aug | Sep | Oct | Nov | Dec |
| 6074-5ZMHWY | Snowmaking | 5891 | 0.5 | 60874 | 60874 | 0 | 0 | 0 | 0 | 0 | 0 | 0 | 0 | 0 | 60874 |
| 98-P-4057 | Other -Misc. | 454.6 | 1 | 4167 | 4167 | 4167 | 4167 | 4167 | 4167 | 4167 | 4167 | 4167 | 4167 | 4167 | 4167 |
| <i>Mississippi River (Outlet)</i> | | | | | | | | | | | | | | | |
| 98-P-4061 | Construction | 454.6 | 0.75 | 3125 | 3125 | 3125 | 3125 | 3125 | 3125 | 3125 | 3125 | 3125 | 3125 | 3125 | 3125 |
| <i>Carp River Near Kinburn</i> | | | | | | | | | | | | | | | |
| 3051-6A3MKS | Water Supply | 5891 | 0.2 | 0 | 0 | 0 | 0 | 35350 | 35350 | 35350 | 35350 | 35350 | 0 | 0 | 0 |
| 6642-6V4T8Y | Remediation | 5509 | 0.25 | 3980 | 3756 | 2644 | 4153 | 5641 | 5808 | 5538 | 4833 | 4902 | 5590 | 5327 | 5075 |
| 5214-6WNJGY | Other - Dewatering | 7776 | 0.25 | 60264 | 54432 | 60264 | 58320 | 60264 | 58320 | 60264 | 60264 | 58320 | 60264 | 58320 | 60264 |
| 01-P-4014 | Golf Course Irrigation | 4.09 | 0.7 | 89 | 80 | 89 | 86 | 89 | 86 | 89 | 89 | 86 | 89 | 86 | 89 |
| 4384-6CXLQ3 | Golf Course Irrigation | 46.48 | 0.7 | 1009 | 911 | 1009 | 976 | 1009 | 976 | 1009 | 1009 | 976 | 1009 | 976 | 1009 |
| 4384-6CXLQ3 | Golf Course Irrigation | 84.39 | 0.7 | 0 | 0 | 0 | 0 | 1831 | 1772 | 1831 | 1831 | 1772 | 1831 | 0 | 0 |
| 4384-6CXLQ3 | Golf Course Irrigation | 54.72 | 0.7 | 0 | 0 | 0 | 0 | 1187 | 1149 | 1187 | 1187 | 1149 | 1187 | 0 | 0 |
| 3051-6A3MKS | Water Supply | 50.01 | 0.2 | 310 | 280 | 310 | 300 | 310 | 300 | 310 | 310 | 300 | 310 | 300 | 310 |
| 3051-6A3MKS | Water Supply | 8.00 | 0.2 | 50 | 45 | 50 | 48 | 50 | 48 | 50 | 50 | 48 | 50 | 48 | 50 |
| 95-P-4062 | Heat Pumps | 45.82 | 0.1 | 95 | 95 | 95 | 95 | 95 | 95 | 95 | 95 | 95 | 95 | 95 | 95 |
| 95-P-4062 | Heat Pumps | 45.82 | 0.1 | 95 | 95 | 95 | 95 | 95 | 95 | 95 | 95 | 95 | 95 | 95 | 95 |
| 98-P-4053 | Other - Commercial | 160.0 | 1 | 4960 | 4480 | 4960 | 4800 | 4960 | 4800 | 4960 | 4960 | 4800 | 4960 | 4800 | 4960 |
| 5007-6CQL87 | Pits and Quarries | 660.0 | 0.25 | 4826 | 4826 | 4826 | 4826 | 4826 | 4826 | 4826 | 4826 | 4826 | 4826 | 4826 | 4826 |
| 5007-6CQL87 | Pits and Quarries | 1584 | 0.25 | 462 | 462 | 462 | 462 | 462 | 462 | 462 | 462 | 462 | 462 | 462 | 462 |
| <i>Carp River (Outlet)</i> | | | | | | | | | | | | | | | |
| 87-P-4060 | Campground | 107.7 | 0.2 | 0 | 0 | 0 | 652 | 673 | 652 | 673 | 673 | 652 | 0 | 0 | 0 |
| <i>Ottawa MVC</i> | | | | | | | | | | | | | | | |
| 6070-6WVM25 | Golf Course Irrigation | 712.0 | 0.7 | 0 | 0 | 0 | 0 | 0 | 11214 | 11214 | 11214 | 11214 | 0 | 0 | 0 |
| 6070-6WVM25 | Golf Course Irrigation | 697.0 | 0.7 | 0 | 0 | 0 | 0 | 0 | 10978 | 10978 | 10978 | 10978 | 0 | 0 | 0 |

| Permit ID | Specific Purpose | Max. Permitted Taking (m ³ /d) | C.F. | Consumptive Demands (m ³ per month) | | | | | | | | | | | |
|---|------------------------|---|------|--|-------|-------|-------|-------|-------|-------|-------|-------|-------|-------|-------|
| | | | | Jan | Feb | Mar | Apr | May | Jun | Jul | Aug | Sep | Oct | Nov | Dec |
| 6070-6WVM25 | Golf Course Irrigation | 825.0 | 0.7 | 0 | 0 | 0 | 0 | 0 | 12994 | 12994 | 12994 | 12994 | 0 | 0 | 0 |
| 6070-6WVM25 | Golf Course Irrigation | 685.0 | 0.7 | 0 | 0 | 0 | 0 | 0 | 10789 | 10789 | 10789 | 10789 | 0 | 0 | 0 |
| 91-P-4026 | Other Water Supply | 414.7 | 0.2 | 774 | 774 | 774 | 774 | 774 | 774 | 774 | 774 | 774 | 774 | 774 | 774 |
| 91-P-4026 | Other Water Supply | 3409 | 0.2 | 6364 | 6364 | 6364 | 6364 | 6364 | 6364 | 6364 | 6364 | 6364 | 6364 | 6364 | 6364 |
| 00-P-4002 | Golf Course Irrigation | 55.00 | 0.7 | 1194 | 1078 | 1194 | 1155 | 1194 | 1155 | 1194 | 1194 | 1155 | 1194 | 1155 | 1194 |
| 00-P-4002 | Golf Course Irrigation | 55.00 | 0.7 | 1194 | 1078 | 1194 | 1155 | 1194 | 1155 | 1194 | 1194 | 1155 | 1194 | 1155 | 1194 |
| 00-P-4002 | Golf Course Irrigation | 55.00 | 0.7 | 1194 | 1078 | 1194 | 1155 | 1194 | 1155 | 1194 | 1194 | 1155 | 1194 | 1155 | 1194 |
| 00-P-4002 | Golf Course Irrigation | 2727 | 0.7 | 0 | 0 | 0 | 0 | 0 | 23867 | 23867 | 23867 | 23867 | 0 | 0 | 0 |
| 91-P-4026 | Other Water Supply | 4546 | 0.2 | 28185 | 25458 | 28185 | 27276 | 28185 | 27276 | 28185 | 28185 | 27276 | 28185 | 27276 | 28185 |
| 1733-6GDJGB | Golf Course Irrigation | 712.0 | 0.7 | 0 | 0 | 0 | 0 | 0 | 14952 | 14952 | 14952 | 14952 | 0 | 0 | 0 |
| 1733-6GDJGB | Golf Course Irrigation | 697.0 | 0.7 | 0 | 0 | 0 | 0 | 0 | 14637 | 14637 | 14637 | 14637 | 0 | 0 | 0 |
| 1733-6GDJGB | Golf Course Irrigation | 325.0 | 0.7 | 0 | 0 | 0 | 0 | 0 | 6825 | 6825 | 6825 | 6825 | 0 | 0 | 0 |
| 1733-6GDJGB | Golf Course Irrigation | 460.0 | 0.7 | 0 | 0 | 0 | 0 | 0 | 9660 | 9660 | 9660 | 9660 | 0 | 0 | 0 |
| 1733-6GDJGB | Golf Course Irrigation | 685.0 | 0.7 | 0 | 0 | 0 | 0 | 0 | 14385 | 14385 | 14385 | 14385 | 0 | 0 | 0 |
| 1733-6GDJGB | Golf Course Irrigation | 325.0 | 0.7 | 0 | 0 | 0 | 0 | 0 | 6825 | 6825 | 6825 | 6825 | 0 | 0 | 0 |
| 1733-6GDJGB | Golf Course Irrigation | 325.0 | 0.7 | 0 | 0 | 0 | 0 | 0 | 6825 | 6825 | 6825 | 6825 | 0 | 0 | 0 |
| 1733-6GDJGB | Golf Course Irrigation | 825.0 | 0.7 | 0 | 0 | 0 | 0 | 0 | 17325 | 17325 | 17325 | 17325 | 0 | 0 | 0 |
| 1733-6GDJGB | Golf Course Irrigation | 650.0 | 0.7 | 0 | 0 | 0 | 0 | 0 | 13650 | 13650 | 13650 | 13650 | 0 | 0 | 0 |
| <i>RIDEAU VALLEY Source Protection Area</i> | | | | | | | | | | | | | | | |
| <i>Tay River At Perth</i> | | | | | | | | | | | | | | | |
| 4742-6ABPK9 | Heat Pumps | 172.8 | 0.1 | 536 | 484 | 536 | 518 | 536 | 518 | 536 | 536 | 518 | 536 | 518 | 536 |

| Permit ID | Specific Purpose | Max. Permitted Taking (m ³ /d) | C.F. | Consumptive Demands (m ³ per month) | | | | | | | | | | | |
|--|------------------------|---|------|--|-------|-------|-------|-------|-------|-------|-------|-------|-------|-------|-------|
| | | | | Jan | Feb | Mar | Apr | May | Jun | Jul | Aug | Sep | Oct | Nov | Dec |
| 4742-6ABPK9 | Heat Pumps | 432.0 | 0.1 | 1339 | 1210 | 1339 | 1296 | 1339 | 1296 | 1339 | 1339 | 1296 | 1339 | 1296 | 1339 |
| 4742-6ABPK9 | Heat Pumps | 432.0 | 0.1 | 1339 | 1210 | 1339 | 1296 | 1339 | 1296 | 1339 | 1339 | 1296 | 1339 | 1296 | 1339 |
| 97-P-4018 | Industrial | 15.36 | 0.25 | 119 | 108 | 119 | 115 | 119 | 115 | 119 | 119 | 115 | 119 | 115 | 119 |
| 97-P-4018 | Industrial | 15.36 | 0.25 | 119 | 108 | 119 | 115 | 119 | 115 | 119 | 119 | 115 | 119 | 115 | 119 |
| 97-P-4018 | Industrial | 15.36 | 0.25 | 119 | 108 | 119 | 115 | 119 | 115 | 119 | 119 | 115 | 119 | 115 | 119 |
| 97-P-4018 | Industrial | 86.40 | 0.25 | 670 | 605 | 670 | 648 | 670 | 648 | 670 | 670 | 648 | 670 | 648 | 670 |
| 97-P-4018 | Industrial | 86.40 | 0.25 | 670 | 605 | 670 | 648 | 670 | 648 | 670 | 670 | 648 | 670 | 648 | 670 |
| 97-P-4018 | Industrial | 164.2 | 0.25 | 1272 | 1149 | 1272 | 1231 | 1272 | 1231 | 1272 | 1272 | 1231 | 1272 | 1231 | 1272 |
| 97-P-4018 | Industrial | 164.2 | 0.25 | 1272 | 1149 | 1272 | 1231 | 1272 | 1231 | 1272 | 1272 | 1231 | 1272 | 1231 | 1272 |
| 97-P-4018 | Industrial | 164.2 | 0.25 | 1272 | 1149 | 1272 | 1231 | 1272 | 1231 | 1272 | 1272 | 1231 | 1272 | 1231 | 1272 |
| 97-P-4018 | Industrial | 164.2 | 0.25 | 1272 | 1149 | 1272 | 1231 | 1272 | 1231 | 1272 | 1272 | 1231 | 1272 | 1231 | 1272 |
| <i>Rideau River Above Smiths Falls</i> | | | | | | | | | | | | | | | |
| 87-P-4059 | Other -Water Supply | 54.72 | 0.2 | 339 | 306 | 339 | 328 | 339 | 328 | 339 | 339 | 328 | 339 | 328 | 339 |
| 3628-6AZJAK | Other -Industrial | 210.0 | 0.25 | 1628 | 1470 | 1628 | 1575 | 1628 | 1575 | 1628 | 1628 | 1575 | 1628 | 1575 | 1628 |
| 3628-6AZJAK | Other -Industrial | 210.0 | 0.25 | 1628 | 1470 | 1628 | 1575 | 1628 | 1575 | 1628 | 1628 | 1575 | 1628 | 1575 | 1628 |
| <i>Rideau River Below Merrickville</i> | | | | | | | | | | | | | | | |
| 2360-6FBL34 | Golf Course Irrigation | 65.46 | 0.7 | 1421 | 1283 | 1421 | 1375 | 1421 | 1375 | 1421 | 1421 | 1375 | 1421 | 1375 | 1421 |
| 2360-6FBL34 | Golf Course Irrigation | 98.19 | 0.7 | 1964 | 1964 | 1964 | 1964 | 1964 | 1964 | 1964 | 1964 | 1964 | 1964 | 1964 | 1964 |
| 3663-6TJRXR | Cooling Water | 909.2 | 0.25 | 7046 | 6364 | 7046 | 6819 | 7046 | 6819 | 7046 | 7046 | 6819 | 7046 | 6819 | 7046 |
| 6238-6A9L76 | Dewatering | 7855 | 0.25 | 60880 | 54988 | 60880 | 58916 | 60880 | 58916 | 60880 | 60880 | 58916 | 60880 | 58916 | 60880 |
| 4728-62W4ZB | Pits and Quarries | 5433 | 0.25 | 42109 | 38034 | 42109 | 40750 | 42109 | 40750 | 42109 | 42109 | 40750 | 42109 | 40750 | 42109 |
| 03-P-4040 | Cooling Water | 1090 | 0.25 | 4133 | 4133 | 4133 | 4133 | 4133 | 4133 | 4133 | 4133 | 4133 | 4133 | 4133 | 4133 |
| 03-P-4040 | Cooling Water | 1090 | 0.25 | 4133 | 4133 | 4133 | 4133 | 4133 | 4133 | 4133 | 4133 | 4133 | 4133 | 4133 | 4133 |
| 03-P-4015 | Communal | 196.4 | 0.2 | 1218 | 1100 | 1218 | 1178 | 1218 | 1178 | 1218 | 1218 | 1178 | 1218 | 1178 | 1218 |
| 03-P-4015 | Communal | 196.4 | 0.2 | 1218 | 1100 | 1218 | 1178 | 1218 | 1178 | 1218 | 1218 | 1178 | 1218 | 1178 | 1218 |
| 00-P-4047 | Golf Course Irrigation | 172.7 | 0.7 | 0 | 0 | 0 | 3628 | 3749 | 3628 | 3749 | 3749 | 3628 | 3749 | 0 | 0 |

| Permit ID | Specific Purpose | Max. Permitted Taking (m ³ /d) | C.F. | Consumptive Demands (m ³ per month) | | | | | | | | | | | |
|---|------------------------|---|------|--|--------|--------|--------|--------|--------|--------|--------|--------|--------|--------|--------|
| | | | | Jan | Feb | Mar | Apr | May | Jun | Jul | Aug | Sep | Oct | Nov | Dec |
| 00-P-4047 | Golf Course Irrigation | 600.0 | 0.7 | 0 | 0 | 0 | 12600 | 13020 | 12600 | 13020 | 13020 | 12600 | 13020 | 0 | 0 |
| 87-P-4023 | Food Processing | 909.2 | 1 | 28185 | 25458 | 28185 | 27276 | 28185 | 27276 | 28185 | 28185 | 27276 | 28185 | 27276 | 28185 |
| 87-P-4068 | Other Water Supply | 98.19 | 0.2 | 147 | 147 | 147 | 147 | 147 | 147 | 147 | 147 | 147 | 147 | 147 | 147 |
| <i>Kemptville Creek Near Kemptville</i> | | | | | | | | | | | | | | | |
| No Permits | | | | | | | | | | | | | | | |
| <i>Rideau River Below Manotick</i> | | | | | | | | | | | | | | | |
| 93-P-4088 | Institutional | 693.9 | 0.25 | 5378 | 4857 | 5378 | 5204 | 5378 | 5204 | 5378 | 5378 | 5204 | 5378 | 5204 | 5378 |
| 93-P-4088 | Institutional | 3967 | 0.25 | 30744 | 27769 | 30744 | 29753 | 30744 | 29753 | 30744 | 30744 | 29753 | 30744 | 29753 | 30744 |
| 6636-6QPRFG | Other - Dewatering | 11100 | 0.25 | 86025 | 77700 | 86025 | 83250 | 86025 | 83250 | 86025 | 86025 | 83250 | 86025 | 83250 | 86025 |
| 2366-6K2QEQ | Other - Remediation | 33.33 | 0.25 | 258 | 233 | 258 | 250 | 258 | 250 | 258 | 258 | 250 | 258 | 250 | 258 |
| 5611-6AYNPX | Tender Fruit | 131.83 | 0.8 | 0 | 0 | 0 | 0 | 0 | 0 | 1055 | 1055 | 0 | 0 | 0 | 0 |
| 5611-6AYNPX | Tender Fruit | 220.9 | 0.8 | 0 | 0 | 0 | 0 | 0 | 0 | 1767 | 1767 | 0 | 0 | 0 | 0 |
| 04-P-4027 | Aggregate Washing | 4546 | 0.25 | 0 | 0 | 32832 | 32832 | 32832 | 32832 | 32832 | 32832 | 32832 | 32832 | 32832 | 0 |
| 03-P-4004 | Sod Farm | 817.6 | 0.9 | 0 | 0 | 0 | 0 | 0 | 2759 | 2759 | 2759 | 2759 | 0 | 0 | 0 |
| 03-P-4004 | Sod Farm | 272.5 | 0.9 | 0 | 0 | 0 | 0 | 0 | 5519 | 5519 | 5519 | 5519 | 0 | 0 | 0 |
| 03-P-4004 | Sod Farm | 545.1 | 0.9 | 0 | 0 | 0 | 0 | 0 | 11038 | 11038 | 11038 | 11038 | 0 | 0 | 0 |
| 6253-6HZRFM | Remediation | 22.00 | 0.25 | 171 | 154 | 171 | 165 | 171 | 165 | 171 | 171 | 165 | 171 | 165 | 171 |
| 8745-6P7H6D | Golf Course Irrigation | 38.00 | 0.7 | 825 | 745 | 825 | 798 | 825 | 798 | 825 | 825 | 798 | 825 | 798 | 825 |
| 8745-6P7H6D | Golf Course Irrigation | 10.00 | 0.7 | 217 | 196 | 217 | 210 | 217 | 210 | 217 | 217 | 210 | 217 | 210 | 217 |
| 8745-6P7H6D | Golf Course Irrigation | 2498 | 0.7 | 0 | 0 | 0 | 0 | 48969 | 48969 | 48969 | 48969 | 48969 | 48969 | 48969 | 0 |
| 2350-5ZZKM4 | Other - Industrial | 9817 | 0.7 | 85907 | 85907 | 85907 | 85907 | 85907 | 85907 | 85907 | 85907 | 85907 | 85907 | 85907 | 85907 |
| 5421-6JKQXQ | Golf Course Irrigation | 327.3 | 0.7 | 7103 | 6415 | 7103 | 6874 | 7103 | 6874 | 7103 | 7103 | 6874 | 7103 | 6874 | 7103 |
| 5421-6JKQXQ | Golf Course Irrigation | 8051 | 0.7 | 174726 | 157817 | 174726 | 169089 | 174726 | 169089 | 174726 | 174726 | 169089 | 174726 | 169089 | 174726 |

| Permit ID | Specific Purpose | Max. Permitted Taking (m ³ /d) | C.F. | Consumptive Demands (m ³ per month) | | | | | | | | | | | |
|---------------------------------|------------------------|---|------|--|------------|------------|------------|------------|------------|--------|------------|------------|------------|------------|--------|
| | | | | Jan | Feb | Mar | Apr | May | Jun | Jul | Aug | Sep | Oct | Nov | Dec |
| 5421-6JKQXQ | Golf Course Irrigation | 478.2 | 0.7 | 10379 | 9374 | 10379 | 10044 | 10379 | 10044 | 10379 | 10379 | 10044 | 10379 | 10044 | 10379 |
| 5421-6JKQXQ | Golf Course Irrigation | 39.27 | 0.7 | 852 | 770 | 852 | 825 | 852 | 825 | 852 | 852 | 825 | 852 | 825 | 852 |
| 5421-6JKQXQ | Golf Course Irrigation | 65.46 | 0.7 | 1421 | 1283 | 1421 | 1375 | 1421 | 1375 | 1421 | 1421 | 1375 | 1421 | 1375 | 1421 |
| 2266-6HYR2B | Golf Course Irrigation | 6.00 | 0.7 | 0 | 0 | 0 | 0 | 128 | 124 | 128 | 128 | 124 | 128 | 0 | 0 |
| <i>Jock River Near Richmond</i> | | | | | | | | | | | | | | | |
| 2366-6K2QEQ | Other – Remediation | 33.33 | 0.25 | 258 | 233 | 258 | 250 | 258 | 250 | 258 | 258 | 250 | 258 | 250 | 258 |
| 2366-6K2QEQ | Other – Remediation | 33.33 | 0.25 | 258 | 233 | 258 | 250 | 258 | 250 | 258 | 258 | 250 | 258 | 250 | 258 |
| 2366-6K2QEQ | Other – Remediation | 33.33 | 0.25 | 258 | 233 | 258 | 250 | 258 | 250 | 258 | 258 | 250 | 258 | 250 | 258 |
| 2366-6K2QEQ | Other – Remediation | 33.33 | 0.25 | 258 | 233 | 258 | 250 | 258 | 250 | 258 | 258 | 250 | 258 | 250 | 258 |
| 2366-6K2QEQ | Other – Remediation | 33.33 | 0.25 | 258 | 233 | 258 | 250 | 258 | 250 | 258 | 258 | 250 | 258 | 250 | 258 |
| 1184-6AZJ6T | Aquaculture | 381.5 | 0.1 | 1183 | 1068 | 1183 | 1145 | 1183 | 1145 | 1183 | 1183 | 1145 | 1183 | 1145 | 1183 |
| 1184-6AZJ6T | Aquaculture | 381.5 | 0.1 | 1183 | 1068 | 1183 | 1145 | 1183 | 1145 | 1183 | 1183 | 1145 | 1183 | 1145 | 1183 |
| 1184-6AZJ6T | Aquaculture | 381.5 | 0.1 | 1183 | 1068 | 1183 | 1145 | 1183 | 1145 | 1183 | 1183 | 1145 | 1183 | 1145 | 1183 |
| 04-P-4023 | Aggregate Washing | 4546 | 0.25 | 0 | 0 | 33462 | 32382 | 33462 | 32382 | 33462 | 33462 | 32382 | 33462 | 32382 | 0 |
| 03-p-4096 | Pits and Quarries | 54.55 | 0.25 | 17 | 17 | 17 | 17 | 17 | 17 | 17 | 17 | 17 | 17 | 17 | 17 |
| 98-P-4060 | Pits and Quarries | 3927 | 0.25 | 20160 | 5501 | 14066 | 22235 | 20500 | 7936 | 12092 | 7507 | 4952 | 6658 | 6862 | 1826 |
| 00-P-4028 | Pits and Quarries | 7364 | 0.25 | 42193 | 42193 | 42193 | 42193 | 42193 | 42193 | 42193 | 42193 | 42193 | 42193 | 42193 | 42193 |
| 03-P-4079 | Pits and Quarries | 6480 | 0.25 | 50220 | 45360 | 50220 | 48600 | 50220 | 48600 | 50220 | 50220 | 48600 | 50220 | 48600 | 50220 |
| 7551-6AHK8M | Other – Dewatering | 6480 | 0.25 | 0 | 0 | 400 | 4082 | 697 | 1247 | 421 | 912 | 3231 | 6531 | 7026 | 8475 |
| 04-P-4003 | Pits and Quarries | 17729 | 0.25 | 137402 | 12410 5 | 13740 2 | 13297 0 | 13740 2 | 13297 0 | 137402 | 13740 2 | 13297 0 | 13740 2 | 13297 0 | 137402 |
| 98-P-4058 | Other – Industrial | 454.6 | 0.25 | 1042 | 1042 | 1042 | 1042 | 1042 | 1042 | 1042 | 1042 | 1042 | 1042 | 1042 | 1042 |
| 03-P-4032 | Communal | 120.0 | 0.2 | 744 | 672 | 744 | 720 | 744 | 720 | 744 | 744 | 720 | 744 | 720 | 744 |

| Permit ID | Specific Purpose | Max. Permitted Taking (m ³ /d) | C.F. | Consumptive Demands (m ³ per month) | | | | | | | | | | | |
|-------------|------------------------|---|------|--|------|------|-------|-------|-------|-------|-------|-------|------|------|------|
| | | | | Jan | Feb | Mar | Apr | May | Jun | Jul | Aug | Sep | Oct | Nov | Dec |
| 5717-6EQJN3 | Other Water Supply | 277.9 | 0.2 | 1723 | 1556 | 1723 | 1668 | 1723 | 1668 | 1723 | 1723 | 1668 | 1723 | 1668 | 1723 |
| 5717-6EQJN3 | Other Water Supply | 576.0 | 0.2 | 3571 | 3226 | 3571 | 3456 | 3571 | 3456 | 3571 | 3571 | 3456 | 3571 | 3456 | 3571 |
| 03-P-4073 | Communal | 60.00 | 0.2 | 372 | 336 | 372 | 360 | 372 | 360 | 372 | 372 | 360 | 372 | 360 | 372 |
| 03-P-4073 | Communal | 60.00 | 0.2 | 372 | 336 | 372 | 360 | 372 | 360 | 372 | 372 | 360 | 372 | 360 | 372 |
| 0004-5ZMGZC | Tender Fruit | 0.11 | 0.8 | 0 | 0 | 0 | 0 | 0 | 0 | 1 | 1 | 0 | 0 | 0 | 0 |
| 0004-5ZMGZC | Tender Fruit | 0.11 | 0.8 | 0 | 0 | 0 | 0 | 0 | 0 | 2 | 2 | 0 | 0 | 0 | 0 |
| 04-P-4010 | Golf Course Irrigation | 3.10 | 0.7 | 0 | 0 | 66 | 64 | 66 | 64 | 66 | 66 | 64 | 66 | 64 | 0 |
| 04-P-4010 | Golf Course Irrigation | 0.50 | 0.7 | 0 | 0 | 11 | 10 | 11 | 10 | 11 | 11 | 10 | 11 | 10 | 0 |
| 04-P-4010 | Golf Course Irrigation | 33.00 | 0.7 | 0 | 0 | 0 | 0 | 0 | 231 | 231 | 231 | 231 | 0 | 0 | 0 |
| 04-P-4010 | Golf Course Irrigation | 33.00 | 0.7 | 0 | 0 | 0 | 0 | 0 | 231 | 231 | 231 | 231 | 0 | 0 | 0 |
| 04-P-4010 | Golf Course Irrigation | 33.00 | 0.7 | 0 | 0 | 0 | 0 | 0 | 231 | 231 | 231 | 231 | 0 | 0 | 0 |
| 8616-6PUKRQ | Golf Course Irrigation | 805.2 | 0.7 | 0 | 0 | 0 | 17048 | 17616 | 17048 | 17616 | 17616 | 17048 | 0 | 0 | 0 |
| 8616-6PUKRQ | Golf Course Irrigation | 780.1 | 0.7 | 0 | 0 | 0 | 16517 | 17067 | 16517 | 17067 | 17067 | 16517 | 0 | 0 | 0 |
| 8616-6PUKRQ | Golf Course Irrigation | 32.73 | 0.7 | 0 | 0 | 0 | 693 | 716 | 693 | 716 | 716 | 693 | 0 | 0 | 0 |
| 1206-639JPC | Golf Course Irrigation | 785.5 | 0.7 | 0 | 0 | 0 | 13747 | 13747 | 13747 | 13747 | 13747 | 13747 | 0 | 0 | 0 |
| 1206-639JPC | Golf Course Irrigation | 130.9 | 0.7 | 0 | 0 | 0 | 2291 | 2291 | 2291 | 2291 | 2291 | 2291 | 0 | 0 | 0 |
| 6513-5ZCKP9 | Golf Course Irrigation | 785.5 | 0.7 | 0 | 0 | 0 | 0 | 0 | 3299 | 3299 | 3299 | 3299 | 0 | 0 | 0 |
| 6513-5ZCKP9 | Golf Course Irrigation | 130.9 | 0.7 | 0 | 0 | 0 | 0 | 0 | 550 | 550 | 550 | 550 | 0 | 0 | 0 |
| 97-P-4115C | Golf Course Irrigation | 40.91 | 0.7 | 888 | 802 | 888 | 859 | 888 | 859 | 888 | 888 | 859 | 888 | 859 | 888 |
| 97-P-4115C | Golf Course Irrigation | 98.19 | 0.7 | 2131 | 1925 | 2131 | 2062 | 2131 | 2062 | 2131 | 2131 | 2062 | 2131 | 2062 | 2131 |
| 97-P-4115C | Golf Course Irrigation | 58.92 | 0.7 | 1278 | 1155 | 1278 | 1237 | 1278 | 1237 | 1278 | 1278 | 1237 | 1278 | 1237 | 1278 |

| Permit ID | Specific Purpose | Max. Permitted Taking (m ³ /d) | C.F. | Consumptive Demands (m ³ per month) | | | | | | | | | | | |
|-------------------------------|------------------------|---|------|--|-------|-------|-------|-------|-------|-------|-------|-------|-------|-------|-------|
| | | | | Jan | Feb | Mar | Apr | May | Jun | Jul | Aug | Sep | Oct | Nov | Dec |
| <i>Rideau River At Ottawa</i> | | | | | | | | | | | | | | | |
| 00-P-4135 | Pits and Quarries | 2000 | 0.25 | 15500 | 14000 | 15500 | 15000 | 15500 | 15000 | 15500 | 15500 | 15000 | 15500 | 15000 | 15500 |
| 97-P-4009 | Pits and Quarries | 7200 | 0.25 | 55800 | 50400 | 55800 | 54000 | 55800 | 54000 | 55800 | 55800 | 54000 | 55800 | 54000 | 55800 |
| 94-P-4007 | Heat Pumps | 227.1 | 0.1 | 704 | 636 | 704 | 681 | 704 | 681 | 704 | 704 | 681 | 704 | 681 | 704 |
| 97-P-4098 | Cooling Water | 566.8 | 0.25 | 4393 | 3968 | 4393 | 4251 | 4393 | 4251 | 4393 | 4393 | 4251 | 4393 | 4251 | 4393 |
| 0670-65HR7F | Communal | 535.7 | 0.2 | 3321 | 3000 | 3321 | 3214 | 3321 | 3214 | 3321 | 3321 | 3214 | 3321 | 3214 | 3321 |
| 0670-65HR7F | Communal | 587.5 | 0.2 | 3643 | 3290 | 3643 | 3525 | 3643 | 3525 | 3643 | 3643 | 3525 | 3643 | 3525 | 3643 |
| 0670-65HR7F | Communal | 941.8 | 0.2 | 5839 | 5274 | 5839 | 5651 | 5839 | 5651 | 5839 | 5839 | 5651 | 5839 | 5651 | 5839 |
| 3686-6PHKVV | Aggregate Washing | 200.0 | 0.25 | 0 | 0 | 1444 | 1444 | 1444 | 1444 | 1444 | 1444 | 1444 | 1444 | 1444 | 0 |
| 3686-6PHKVV | Aggregate Washing | 5300 | 0.25 | 0 | 0 | 38278 | 38278 | 38278 | 38278 | 38278 | 38278 | 38278 | 38278 | 38278 | 0 |
| 04-P-4033 | Golf Course Irrigation | 588.0 | 0.7 | 0 | 0 | 0 | 12179 | 12585 | 12179 | 12585 | 12585 | 12179 | 0 | 0 | 0 |
| 04-P-4033 | Golf Course Irrigation | 336.0 | 0.7 | 0 | 0 | 0 | 6959 | 7191 | 6959 | 7191 | 7191 | 6959 | 0 | 0 | 0 |
| 03-P-4094 | Golf Course Irrigation | 1591 | 0.7 | 0 | 0 | 0 | 32485 | 32485 | 32485 | 32485 | 32485 | 32485 | 0 | 0 | 0 |
| 03-P-4094 | Golf Course Irrigation | 818.3 | 0.7 | 0 | 0 | 0 | 14320 | 14320 | 14320 | 14320 | 14320 | 14320 | 0 | 0 | 0 |
| 4520-67WQ53 | Golf Course Irrigation | 588.0 | 0.7 | 0 | 0 | 0 | 12179 | 12585 | 12179 | 12585 | 12585 | 12179 | 0 | 0 | 0 |
| 4520-67WQ53 | Golf Course Irrigation | 336.0 | 0.7 | 0 | 0 | 0 | 6959 | 7191 | 6959 | 7191 | 7191 | 6959 | 0 | 0 | 0 |
| 90-P-4019 | Other – Misc. | 3456 | 1 | 28645 | 28645 | 28645 | 28645 | 28645 | 28645 | 28645 | 28645 | 28645 | 28645 | 28645 | 28645 |
| 1314-68UQSY | Golf Course Irrigation | 618.2 | 0.7 | 0 | 0 | 11631 | 11631 | 11631 | 11631 | 11631 | 11631 | 11631 | 11631 | 0 | 0 |
| <i>Rideau River (Outlet)</i> | | | | | | | | | | | | | | | |
| 3757-6MUQV8 | Dewatering | 395.8 | 0.25 | 231 | 231 | 231 | 231 | 231 | 231 | 231 | 231 | 231 | 231 | 231 | 231 |
| 5253-653NSM | Dewatering | 100.0 | 0.25 | 88 | 88 | 88 | 88 | 88 | 88 | 88 | 88 | 88 | 88 | 88 | 88 |
| <i>Ottawa RVCA (West)</i> | | | | | | | | | | | | | | | |
| 1358-6KSS85 | Dewatering | 1308 | 0.25 | 10144 | 9163 | 10144 | 9817 | 10144 | 9817 | 10144 | 10144 | 9817 | 10144 | 9817 | 10144 |
| 1358-6KSS85 | Dewatering | 176.4 | 0.25 | 1367 | 1235 | 1367 | 1323 | 1367 | 1323 | 1367 | 1367 | 1323 | 1367 | 1323 | 1367 |
| 1358-6KSS85 | Dewatering | 4233 | 0.25 | 32810 | 29635 | 32810 | 31752 | 32810 | 31752 | 32810 | 32810 | 31752 | 32810 | 31752 | 32810 |

| Permit ID | Specific Purpose | Max. Permitted Taking (m ³ /d) | C.F. | Consumptive Demands (m ³ per month) | | | | | | | | | | | | |
|---------------------------|------------------------|---|------|--|-------|-------|-------|-------|-------|-------|-------|-------|-------|-------|-------|---|
| | | | | Jan | Feb | Mar | Apr | May | Jun | Jul | Aug | Sep | Oct | Nov | Dec | |
| 6144-6K4MW8 | Remediation | 326.9 | 0.25 | 2533 | 2288 | 2533 | 2452 | 2533 | 2452 | 2533 | 2533 | 2452 | 2533 | 2452 | 2533 | |
| 5125-6YNJSR | Remediation | 172.8 | 0.5 | 2678 | 2419 | 2678 | 2592 | 2678 | 2592 | 2678 | 2678 | 2592 | 2678 | 2592 | 2678 | |
| 5578-6VQMV9 | Other Water Supply | 980.0 | 0.2 | 3495 | 3495 | 3495 | 3495 | 3495 | 3495 | 3495 | 3495 | 3495 | 3495 | 3495 | 3495 | |
| 5578-6VQMV9 | Other Water Supply | 110.0 | 0.2 | 682 | 616 | 682 | 660 | 682 | 660 | 682 | 682 | 660 | 682 | 660 | 682 | |
| 5578-6VQMV9 | Other Water Supply | 190.0 | 0.2 | 678 | 678 | 678 | 678 | 678 | 678 | 678 | 678 | 678 | 678 | 678 | 678 | |
| 5578-6VQMV9 | Other Water Supply | 6.00 | 0.2 | 37 | 34 | 37 | 36 | 37 | 36 | 37 | 37 | 36 | 37 | 36 | 37 | |
| 5578-6VQMV9 | Other Water Supply | 35.0 | 0.2 | 217 | 196 | 217 | 210 | 217 | 210 | 217 | 217 | 210 | 217 | 210 | 217 | |
| 5578-6VQMV9 | Other Water Supply | 0.45 | 0.2 | 1 | 1 | 1 | 1 | 1 | 1 | 1 | 1 | 1 | 1 | 1 | 1 | |
| 5578-6VQMV9 | Other Water Supply | 41.00 | 0.2 | 254 | 230 | 254 | 246 | 254 | 246 | 254 | 254 | 246 | 254 | 246 | 254 | |
| 5578-6VQMV9 | Other Water Supply | 4.50 | 0.2 | 14 | 14 | 14 | 14 | 14 | 14 | 14 | 14 | 14 | 14 | 14 | 14 | |
| 01-P-4001 | Other Misc. | 65.46 | 0.1 | 203 | 183 | 203 | 196 | 203 | 196 | 203 | 203 | 196 | 203 | 196 | 203 | |
| 01-P-4001 | Other Misc. | 65.46 | 0.1 | 203 | 183 | 203 | 196 | 203 | 196 | 203 | 203 | 196 | 203 | 196 | 203 | |
| 03-P-4049 | Groundwater | 65.46 | 0.5 | 1015 | 916 | 1015 | 982 | 1015 | 982 | 1015 | 1015 | 982 | 1015 | 982 | 1015 | |
| 98-P-4094 | Groundwater | 326.9 | 0.5 | 5067 | 4576 | 5067 | 4903 | 5067 | 4903 | 5067 | 5067 | 4903 | 5067 | 4903 | 5067 | |
| 95-P-4010 | Schools | 480.0 | 0.25 | 3720 | 3360 | 3720 | 3600 | 3720 | 3600 | 3720 | 3720 | 3600 | 3720 | 3600 | 3720 | |
| <i>Ottawa RVCA (East)</i> | | | | | | | | | | | | | | | | |
| 95-P-4027 | Golf Course Irrigation | 757.0 | 0.7 | 0 | 0 | 0 | 15140 | 15140 | 15140 | 15140 | 15140 | 15140 | 15140 | 15140 | 0 | 0 |
| 3128-6AWJR4 | Other - Dewatering | 113.6 | 0.25 | 881 | 796 | 881 | 852 | 881 | 852 | 881 | 881 | 852 | 881 | 852 | 881 | |
| 3128-6AWJR4 | Other - Dewatering | 2618 | 0.25 | 20293 | 18329 | 20293 | 19639 | 20293 | 19639 | 20293 | 20293 | 19639 | 20293 | 19639 | 20293 | |
| 3128-6AWJR4 | Other - Dewatering | 5891 | 0.25 | 45660 | 41241 | 45660 | 44187 | 45660 | 44187 | 45660 | 45660 | 44187 | 45660 | 44187 | 45660 | |
| 04-P-4009 | Gardens | 54.55 | 0.9 | | | | | | | 1551 | 1551 | | | | | |
| 04-P-4009 | Gardens | 54.55 | 0.9 | 0 | 0 | 0 | 0 | 0 | 1477 | 1526 | 1526 | 1477 | 0 | 0 | 0 | |
| 04-P-4009 | Gardens | 81.83 | 0.9 | | | | | | | 2327 | 2327 | | | | | |
| 2237-6QLLL2 | Other- Water Supply | 2.73 | 0.2 | 17 | 15 | 17 | 16 | 17 | 16 | 17 | 17 | 16 | 17 | 16 | 17 | |

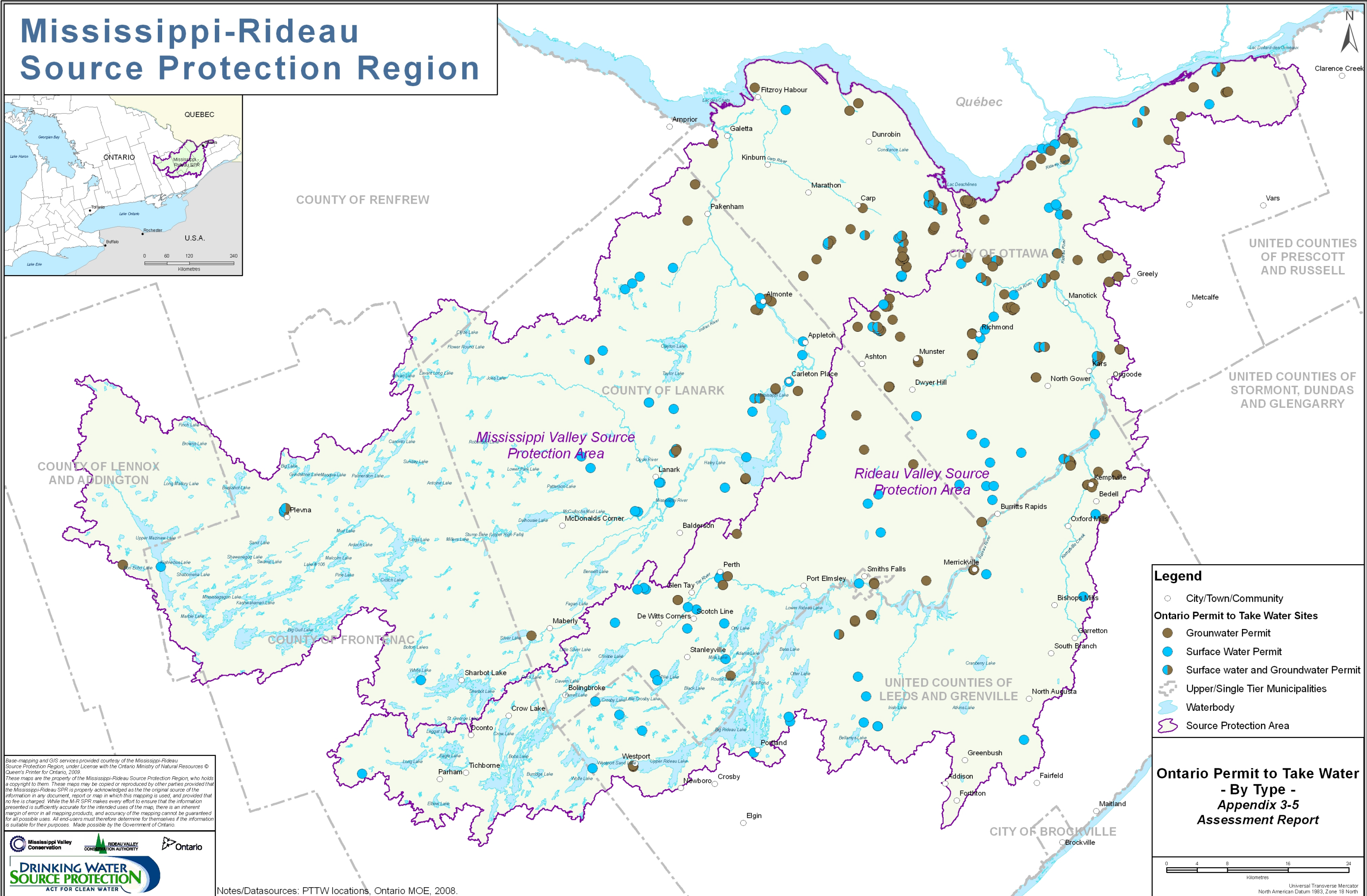
| Permit ID | Specific Purpose | Max. Permitted Taking (m ³ /d) | C.F. | Consumptive Demands (m ³ per month) | | | | | | | | | | | |
|-------------|------------------------|---|------|--|------|------|------|------|------|------|------|------|------|------|------|
| | | | | Jan | Feb | Mar | Apr | May | Jun | Jul | Aug | Sep | Oct | Nov | Dec |
| 2237-6QLLL2 | Other Water Supply | 2725 | 0.2 | 9721 | 9721 | 9721 | 9721 | 9721 | 9721 | 9721 | 9721 | 9721 | 9721 | 9721 | 9721 |
| 2237-6QLLL2 | Other Water Supply | 34.07 | 0.2 | 211 | 191 | 211 | 204 | 211 | 204 | 211 | 211 | 204 | 211 | 204 | 211 |
| 7228-636RLE | Tender Fruit | 36.00 | 0.8 | 0 | 0 | 0 | 0 | 0 | 0 | 288 | 288 | 0 | 0 | 0 | 0 |
| 7228-636RLE | Tender Fruit | 43.20 | 0.8 | 0 | 0 | 0 | 0 | 0 | 0 | 346 | 346 | 0 | 0 | 0 | 0 |
| 7228-636RLE | Tender Fruit | 216.0 | 0.8 | 0 | 0 | 0 | 0 | 0 | 0 | 1728 | 1728 | 0 | 0 | 0 | 0 |
| 0486-6DEQWL | Golf Course Irrigation | 346.5 | 0.7 | 0 | 0 | 0 | 0 | 7416 | 7177 | 7416 | 7416 | 7177 | 0 | 0 | 0 |

Appendix 3-5

PTTW Locations

Mississippi-Rideau Source Protection Region

Mississippi-Rideau Source Protection Region



Legend

- City/Town/Community
- Ontario Permit to Take Water Sites**
- Groundwater Permit
- Surface Water Permit
- Surface water and Groundwater Permit
- ⊞ Upper/Single Tier Municipalities
- Waterbody
- Source Protection Area

Ontario Permit to Take Water - By Type - Appendix 3-5 Assessment Report



Base-mapping and GIS services provided courtesy of the Mississippi-Rideau Source Protection Region, under License with the Ontario Ministry of Natural Resources © Queen's Printer for Ontario, 2009.

These maps are the property of the Mississippi-Rideau Source Protection Region, who holds a copyright to them. These maps may be copied or reproduced by other parties provided that the Mississippi-Rideau SPR is properly acknowledged as the original source of the information in any document, report or map in which this mapping is used, and provided that no fee is charged. While the M-R SPR makes every effort to ensure that the information presented is sufficiently accurate for the intended uses of the map, there is an inherent margin of error in all mapping products, and accuracy of the mapping cannot be guaranteed for all possible uses. All end-users must therefore determine for themselves if the information is suitable for their purposes. Made possible by the Government of Ontario.



Notes/Datasources: PTTW locations, Ontario MOE, 2008.